

LS6

LEAF STUDIO SIXTH FORM

PERFORMING ARTS | SPORT | ACADEMICS



16-18 PROSPECTUS
PERFORM TO YOUR POTENTIAL

**"WE WILL TRY AND
OBTAIN PERFECTION,
WELL KNOWING WE
CAN'T ATTAIN
PERFECTION AND
WE'LL ACHIEVE
EXCELLENCE ALONG
THE WAY."**

Vince Lombardi



WELCOME FROM THE HEAD OF SIXTH FORM

Making your choices for Sixth Form is monumental. Rest easy in knowing we are committed to you and your education. I can confidently say we are experts in our field and dedicate 100% to our students.

I am thrilled to introduce and welcome you to LS6, LeAF Studio's Sixth Form provision where our ethos is **Be Responsible, Be Respectful, Be Ready**. Thank you for considering us for your next steps!

Within this prospectus I hope you will find everything that you need to know before applying to LS6. If not, please do contact one of our dedicated team. Alternatively, please visit our website.

LS6 is a thriving place to be and we love working here alongside talented young people everyday, helping them pave their future pathways in their specialism or beyond; all through a provision of outstanding opportunities, high-quality teaching and passionate pastoral care.

Our entire team work with you, the student, at the forefront of our choices and will support you for your two years of study. The two years with us will be two of the most rewarding years of your life where you will make the transition from GCSE to an Advanced Level student and work to develop your career dreams into a reality.

Everything we do at LS6 is designed to help you achieve and become your very best, not just in the grades you receive but as well-developed, social and confident members of society. We offer you a perfect balance between independence and support, within a traditional school environment.

If you haven't already attended an open evening, we'd love the chance to meet you. Please do come and see us in action!

My team and I look forward to meeting you soon.

GEOFF LAKE

Assistant Vice Principal | Head of Sixth Form



Overall effectiveness

Effectiveness of leadership and management

Quality of teaching, learning and assessment

Personal development, behaviour and welfare

Outcomes for pupils 16 to 19 study programmes

Overall effectiveness at previous inspection

Good

Good

Good

Good

Good

Good


Ofsted
Good
Provider

OVERVIEW

LeAF Studio is a Studio School specialising in Sport and Performing Arts. Based in Bournemouth, we provide a bespoke education for 16–19 year olds, combining a rigorous academic curriculum with practical, vocational training.

We opened in 2012 and moved into our modern and versatile building September 2013 which is proudly home to both our specialisms. Since September 2017 we have been part of the Ambitions Academies Trust.

Recognised by Ofsted as a GOOD school with outstanding features in 2019, we are regularly one of the top Studio Schools in England for both our academic progress and vocational destinations.

Internal and external students should transition into LS6 with a clear specialism in either Sport or Performing Arts. Students can study vocational BTECs or a combination of both BTEC and academic A-levels – all entirely dependent on their own career pathways.

Our aim is for every learner to be able to move seamlessly from LeAF Studio into employment, professional performance, or university; equipped with the necessary skills, knowledge and understanding to purposefully engage in all of the challenges and opportunities they will experience.



WHY CHOOSE LS6?

- Up to 24 hours of contact time each week
- Outstanding alumni destinations
- The independence of a college with the support and structure of a school
- Dedicated, specialist Teachers, Coaches, Tutors and Head of Sixth Form
- Known personally by staff
- Outstanding pastoral care
- Fully supportive careers programme
- Full range of personal development and enrichment opportunities
- Like-minded peers attending for the same goals
- Well connected with our industries
- Authorised absence for competitions, exams and events linked to your specialism
- Authorised absence for driving tests
- A dedicated Sixth Form Centre for LS6 students only; including a kitchen area
- No expectation to remain on site during free periods
- Internal and external unrivalled opportunities not offered at any other local Sixth Form/College
- Train and study in both your specialism and academics
- Close to local shops and amenities
- Proud of everything we do! #PTBL #TeamLeAF

THE LS6 CORE TEAM



At LS6, you will be well supported by a passionate team including LeAF Studio's Principal and a dedicated Head of Sixth Form. Additionally you will have a form tutor who doubles as your Specialism Lead. Within our dedicated Sixth Form team, we have Designated Safeguarding and Pastoral Leads who are available during your time with us.

Our staff team work with your success in the forefront of every decision. The LS6 Team will nurture, challenge and know you and your family personally.

We want to see you achieve your goals and will support you in every way we possibly can.

In addition to our core team, you will be taught and trained by our excellent teaching and coaching faculty; enhancing your educational journey to ensure your progress and achieve your very best.

STUDENT LEADERSHIP AT LS6

Each year we appoint a Student Leadership Team across LeAF Studio Sixth Form.

This team comprises of students from Year 12 and 13 who are appointed as Head and Deputy Head students. These students lead our whole school Student Voice team which is made up of students from Year 9 through to Year 11.

A wide array of roles are available within the Student Leadership Team enabling our student's voices to be heard and provide crucial school feedback that we use to develop our school.

All students follow an application process for their roles and complete a variety of tasks across the academic year.

These roles include:

- Supporting main school and LS6 events
- Supporting student and staff recruitment
- Fundraising
- Planning the annual leavers events
- Termly meetings with staff and students
- Supporting and mentoring main school students
- Providing crucial school improvement feedback
- Working with an external agencies

#TEAMLEAF

#PTBL





MOVE IT - THE WORLD'S BIGGEST
DANCE EVENT



JAW-DROPPING SHOWCASES
AND PRODUCTIONS



DUAL CAREERS | TASS ELITE TRAINING



LS6 STUDENT EXPERIENCE

Written by LS6 students.

Being part of LS6 is not like staying in a typical school sixth form. As a LS6 student, you can expect inclusivity, friendliness and fun!

In collaboration, Sport and Stage bond as one in the brand-new sixth form centre. This is located across the field from the main school, and includes a student kitchen, workspaces, toilets and a sociable chill area. Within this space, you can work with like-minded people and communicate with others from differing specialisms and backgrounds.

During your time at LS6, you will be exposed to 1:1 training, hands-on workshops, a personalised timetable and consistent student support. For example, past students have participated in school football matches, off-campus dance events, military training days, alumni performing arts workshops and much more. Through this, each individual is pushed to be their best self, whether that is in academics, training or general student life. Having this extra push allows students at LeAF to work towards their preferred career, whether that may be academic, specialism or a combination of both.

LeAF Studio Sixth Form stands out from other schools due to its promotion of individuality, abundance of opportunities and the overall student experience.

"I commit to a commute from Southampton everyday and I chose LS6 because of the extra training hours compared to other colleges in my area. It has a professional environment that will best prepare me for the industry."

"I would recommend LeAF to anyone who is looking for a career in Sport, they will get the best out of you. I am now applying for universities to study Sports Development to follow my dream of coaching at a professional level. My head has fully turned to a bright future thanks to the help and guidance that LeAF offer!"

"I am proud to be at LS6 as there is an inclusive environment where individuality is promoted. There is such a welcoming atmosphere and everyone supports what makes me, me! There is no judgement and I couldn't be happier"



"I owe two of the best years of my life to LS6!"

"LS6 offers an incredible opportunity for Post 16 study, that should be a serious consideration for any aspiring athlete. The ability to combine training and competing at a high level, while also undertaking academic study to gain qualifications to enter top Sports universities, is second to none."

"I've never felt so welcomed to a school before. I cannot thank the Performing Arts staff enough for everything they've done for me whilst being at LeAF. The one thing I love about LeAF is the teachers go above and beyond and give up their spare time to help students."

"Throughout my 2 years at LS6 you've continued to support me and give great advice. I wouldn't have the drive and determination I've got if it wasn't for all of you. Thank you for all believing in me. LeAF will always hold a special place in my heart."

PATHWAYS AT LS6

1

PATHWAY 1 – Specialism Only

- 3 A-level equivalent BTEC course in either Performing Arts or Sport
- Technical training in Performing Arts or Sport

This pathway is suitable for those students who wish to study and train purely for their specialism.

2

PATHWAY 2– Specialism with A-level(s)

- 2 A-level equivalent BTEC course in either Performing Arts or Sport
- Technical training in Performing Arts or Sport
- 1 academic A-level subject

This pathway is suitable for those students who wish to study and train for a dual career.

It may be possible for academically able students to complete the BTEC Extended Diploma and 1 or 2 A-levels meaning a total of 4 or 5 A-levels at the end of the two years at LS6. This is at the discretion of Specialism Leads and Senior Leaders.

OPEN TO EVERYONE

We invite everyone who is passionate about their next steps to apply for us. Our students and applicants come from all over Bournemouth, Christchurch and Poole and stretch as far as Yeovil and Hampshire. We have also had a selection of students move from further afield to join LS6.

For application details, please view the back page of this prospectus.

ENTRY REQUIREMENTS

Sport

- Successful aptitude test
- Minimum L5 in (or Level 2 BTEC Sport Merit) – if studied
- Minimum L5 in GCSE English
- Minimum L4 in GCSE Maths and Science

Performing Arts

- Successful aptitude test
- Minimum L5 in Performing Arts subject (or Level 2 BTEC Merit) – if studied
- Minimum L5 in GCSE English
- Minimum L4 in GCSE Maths

A-levels

A-level subjects usually require a L6 in the same subject (or equivalent) at GCSE level. Some A-levels may carry additional entry requirements. Unless higher is required, you must achieve at least a L5+ in English and Maths. You may be able to study an A-level you have not previously studied at GCSE depending on your overall GCSE results.



If you don't receive the entry requirements, we will always have discussions surrounding your application.

At LeAF Studio Sixth Form, we value the opportunity to meet you in person after you have submitted an application. We love to find out more about you, see you in action or answer any questions that you may have.

PERFORMING ARTS

BTEC LEVEL 3

up to 24 hours of contact time a week!

EQUIVALENT TO 1, 2 OR 3 A-LEVELS

Our intense two year, full-time Performing Arts programme provides students with a recognised qualification in Performing Arts equivalent to one, two or three A-levels. LS6 students receive **up to 21 hours of contact time a week** and **up to 5 hours a week** for events and productions.

Train and study in Acting, Singing, Dance and Musical Theatre, combining the best of focused, vocational training with excellent academic achievement to equip students with the diverse range of skills required in these highly competitive industries. Working with your existing training provider we will further develop and endorse your creative skill set. LeAF Stage & Screen provides learners with **a strong grounding in the arts.**

Your Training at LS6

- 1:1 Singing
- Acrobatic Arts
- Acting
- Acting Company
- Acting through Song
- Audition Preparation
- Advanced Dance Company
- Ballet
- Dance
- Contemporary Dance Company
- LAMDA
- Musical Theatre
- Singing
- Strength & Conditioning
- Tap
- UCAS and College Applications
- Vocational Development/Integrated Performance

Your BTEC Performing Arts course

As part of your qualification you will explore a wide range of the Performing Arts industry including:

- Contextual studies of performing arts practitioners
- Devising
- Choreographing
- Exploration of dance and acting styles
- Musical theatre and its development
- Working from stimuli
- Script work
- Theatre in the community
- Developing performance skills
- Being a healthy performer
- Singing and developing your voice
- Roles and interrelationships of creatives
- Performing to a range of audiences
- Creating a digital promotional portfolio

Performance Opportunities

- Move It - Main Stage and Showcase Theatre
- Annual summer showcase at Lighthouse, Poole
- Intimate vocal evenings in-house and locally
- Dance showcase in-house and locally
- Local corporate events
- Plays
- Local care homes, adult learning centres and primary schools
- Termly performance assessments

Where next?

- Vocational college/conservatoires
- Specialism university
- Teaching
- Academic pathway at university
- Employment in the industry
- Dual career

Why LS6 for Performing Arts?

- Passionate and dedicated, likeminded peers
- Workshops and auditions with some of the UK's top vocational colleges and universities
- Fully supportive of your dance/theatre school commitments
- Perform at MOVE IT and CYD?
- Perform locally at every opportunity
- Large amount of contact time
- A proven track record of alumni success
- A faculty of award-winning teachers and coaches with industry expertise
- Regular trips to the theatre



"There is a real community vibe in Performing Arts at LeAF Studio.

Everyone cares for each other. The training provided is always the highest quality and industry focused which is needed for world we are entering"





"We were all worried that, having never been at LeAF before, it would be hard for her to make friends and be noticed amongst students you already know so well, but **her whole experience so far since she started at LeAF has been brilliant**, you have all been amazing and she loves it so much, **it was definitely the right decision to move her.**"

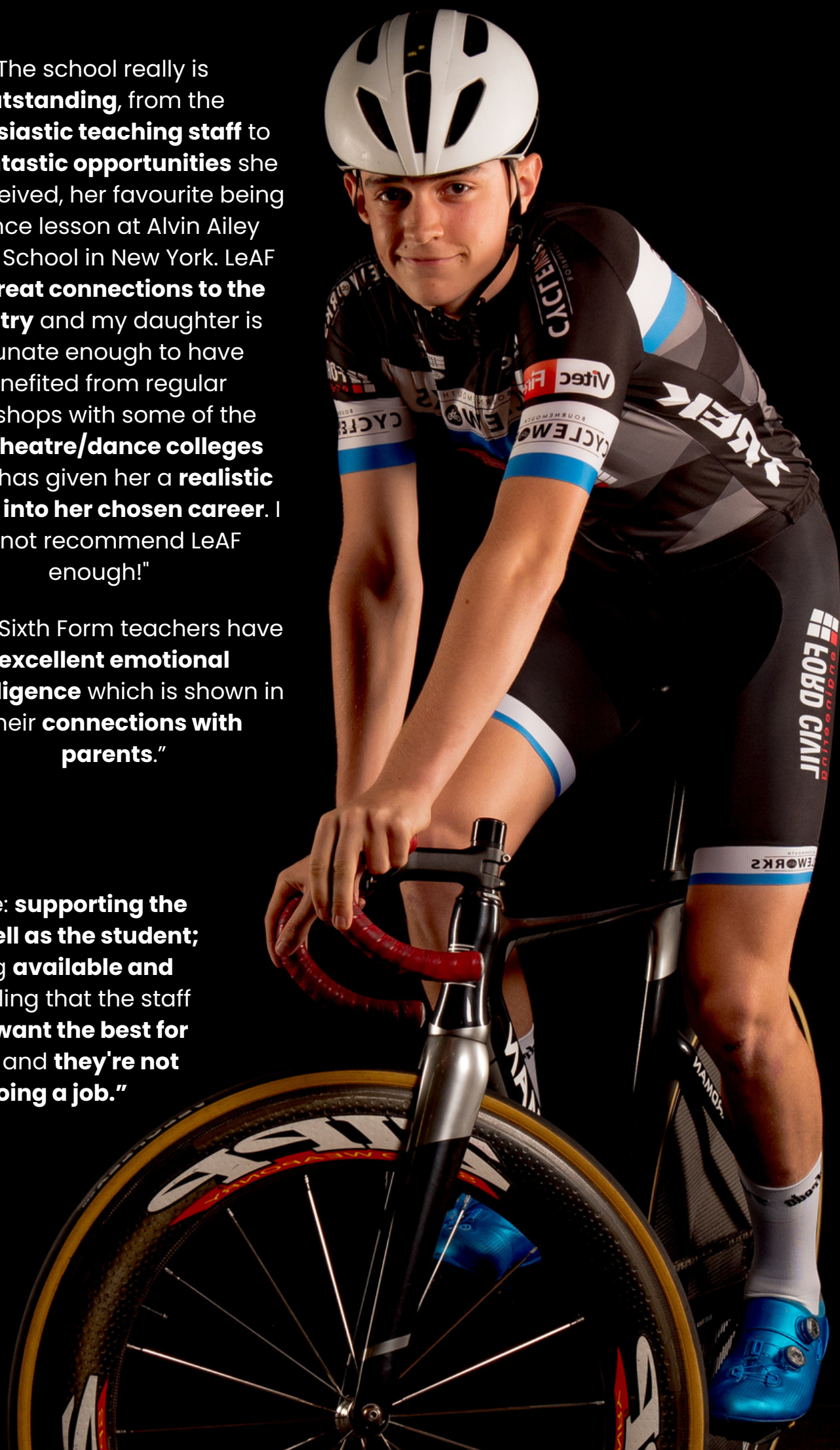
"I only wish I'd known about this school two years earlier. **I cannot recommend this school enough!**"

"Since joining LS6 my son has **gone from strength to strength**. He **loves going to LeAF** and is grateful for the **amazing teaching**. I would **recommend to all!**"

"The school really is **outstanding**, from the **enthusiastic teaching staff** to the **fantastic opportunities** she has received, her favourite being a dance lesson at Alvin Ailey Dance School in New York. LeAF has **great connections to the industry** and my daughter is fortunate enough to have benefited from regular workshops with some of the **best theatre/dance colleges** which has given her a **realistic insight into her chosen career**. I cannot recommend LeAF enough!"

"The Sixth Form teachers have **excellent emotional intelligence** which is shown in their **connections with parents**."

"In my case: **supporting the family as well as the student**; staff being **available and honest**; feeling that the staff **genuinely want the best for your child** and **they're not just doing a job**."



SPORT

BTEC LEVEL 3

up to 24 hours of contact time a week!

EQUIVALENT TO 1, 2 OR 3 A-LEVELS

Our Sports specialism at LS6 provides students with a recognised qualification for the Sports industry, equivalent to one, two or three A-levels. LS6 students receive up to 21 hours of contact time a week and opportunities to train offsite with our Academy of Sport providers.

LeAF Athlete Academy combines the best of focused, vocational learning with excellent academic achievement to equip students with the diverse range of skills required in these highly competitive sporting sectors. Working in partnership with external coaches and clubs, our Sport Specialism provides learners with a comprehensive support network, in order to form and fulfil a successful dual career.

Your Training at LS6

- Individualised Training Programmes
- Personalised Strength & Conditioning
- Dual Career Lifestyle Support (TALS)
- TASS (Talented Athlete Scholarship Scheme) accredited sessions
- Anthropometric Testing and Maturation screening
- Force Plate Data Analysis
- Sport Psychology support
- Sports Nutrition guidance
- Marketing and Sponsorship guidance
- Rehab and Prehab
- UCAS and College Applications
- Sports Scholarships to USA
- Links with external coaches to give you a seamless provision between external and internal coaches

Your BTEC Sport course

As part of your qualification you will explore a wide range of disciplines within the Sports industry including:

- Sport and Exercise Science industries
- Sports Coaching and Officiating industry
- Sports Development & Business industries
- Health and Personal Fitness industries
- Sports Analysis Industry
- Sports Psychology Industry
- CV and professional dual career social media pages

Where next?

- Professional Sports contracts/careers
- Elite player performance pathway
- Dual Career Pathway
- Specialism university
- Academic pathway at university
- Employment in the industry

Sporting Opportunities

- District, Regional and National School Competitions
- ENOSS (European Network of Sports Schools) exchange opportunities
- Overseas training camps and competition
- Talent Identification sessions for various NGBs
- Coaching, sports development and other dual career opportunities alongside sporting performance
- Opportunities to complete coaching qualifications

Why LS6 for Sport?

- Passionate and dedicated, likeminded peers
- True dual-career emphasis on developing both the academic and sporting aspirations of each student
- Excellent workshops and trips to some of the UK's top colleges/universities within the sports industry
- A fantastic provision of guest speakers offering advice and guidance for elite athletes
- An exciting and engaging curriculum both for academic qualifications and industry approved coaching courses
- Friendly and competitive events locally and further afield
- A proven track record of alumni success
- Experienced and knowledgeable teachers and coaches with industry and sporting expertise
- Regular trips to sporting events and industry workplaces.



"The experience is second to none. With endless training opportunities catered to your individual needs as an athlete. Being surrounded by staff and like minded students who have invaluable industry knowledge and experience, which you won't get else where"

ACADEMIC A-LEVELS



At LeAF Studio Sixth Form we offer the following A-level subjects. **These can be taken on Pathway 2 only.**

A-level subjects at LS6 require a Level 6 grade in the same subject (or equivalent) and a Level 5 or above in English and Maths at GCSE level. You may be able to study an A-level you have not previously studied at GCSE depending on your overall GCSE results.

Subjects will depend on numbers to run. Subjects can be removed from timetabling up until enrolment day whereby numbers are confirmed.

A-level Biology

Gain a deeper knowledge and understanding of the living world from the molecular level to complex systems and how organisms interact with our ever changing environment.

A-level English Language & Literature

English Language & Literature combines skills from both disciplines in a varied study of literary fiction and non-literary texts. It will build on skills gained at GCSE and develop an understanding of linguistic and literary theory. Thrive on your love of reading!

A-level Psychology

Psychology will give you an understanding of the way people think and why people behave in certain ways. You will learn a variety of skills including analytical thinking, improved communication skills, problem solving and many more that will prepare you for an exciting future with the possibility of a range of fantastic careers in nursing, policing, armed forces, social work and many more.

Extended Project Qualification (EPQ)

EPQ is an A-level standard standalone qualification designed to extend and develop student abilities beyond the A-level syllabus and prepare them for university or their future career. It's worth half an A-level and allows students to lead their own projects. Students get to plan and carry out research on a topic that they've chosen and isn't covered by their other qualifications.



"I've now chosen a career outside of my specialism and I hope to take a Nursing degree at university and luckily for me my A-level and BTEC qualifications support this."

(Alumni Student)

"Leaders are developing the sixth-form curriculum to focus on the school's particular strengths and the needs of its students. This is leading to significantly improved outcomes."

(OFSTED)

"I've now chosen a career outside of my specialism and I hope to take a Nursing degree at university and luckily for me my A-level and BTEC qualifications support this."

(Alumni Student)

"I wanted to continue with my specialism but did not wish to stop as an academically able student. LS6 provided me with the opportunity to achieve 5 A-levels when I completed my two years there, thank you!"

(Alumni Student)

"The sixth form is growing rapidly. It provides high-quality teaching of practical subjects. Students are given good opportunities to develop their talents through a strong programme of additional opportunities and high-quality work experience."

(OFSTED)

"I wanted to continue with my specialism but did not wish to stop as an academically able student. LS6 provided me with the opportunity to achieve 5 A-levels when I completed my two years there, thank you!"

(Alumni Student)

FACILITIES

At LeAF Studio, we are very proud of our facilities which provide state of the art learning environments for our students.

Some of our facilities include:

- Large indoor activities building (MSC)
- Strength and Conditioning centre
- Playing fields
- Three fully equipped Performing Arts studios
- Recording studio
- Dedicated Sixth Form Centre including a kitchen area

FEES AND FUNDING

It's completely FREE to study and train at LeAF Studio Sixth Form. The courses, qualifications and training to our students is fully funded by our Government School Funding.

Students will usually have to pay for any specialist equipment, including their uniform. As with any other Post-16 provider, they may also be expected to pay for stationery, books and specialist events and field trips.

Students have the opportunity to sign up and pay for private/peripetetic teaching which is a private agreement with our team of coaches.

LeAF Studio Sixth Form strive to subsidise and keep additional costs as low as possible. We operate a voluntary Support and Training Fund which parents can donate to monthly to support the specialisms, including purchasing equipment and offering discounted vocational opportunities to our students.

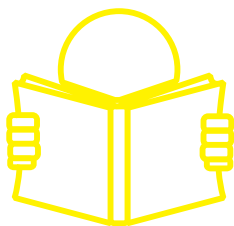
There are lots of ways to receive further student discounts including NUS cards and many different student discount apps.

In addition, some students may be eligible for the 16-19 bursary which is a means-tested fund to help support students in Further Education.



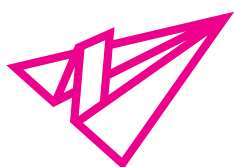
SUPPORT, GUIDANCE AND DEVELOPMENT

At LeAF Studio Sixth Form, we've got you and your personal development covered! Through our dedicated programmes which have been well developed by our passionate staff! You're in safe hands!



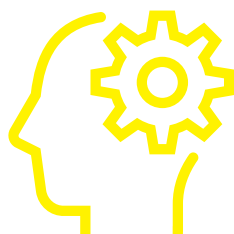
READING

We value reading as an empowering skill for our students to not only achieve more highly across all areas of the curriculum, but also to develop a lifelong love of all types of literature which enriches all aspects of their learning journey throughout life. Our students are encouraged to develop skills of empathy by promoting a wider world view through reading an extensive range of literature and fostering an understanding of different perspectives.



UNIVERSITY AND COLLEGE APPLICATIONS

During Year 13, you will have access to 1:1 support and group sessions that focus on the UCAS and application process for university and vocational college. Staff will support you every step of the way in securing places at your chosen institutions. Should your career path change throughout your time at LeAF, our dedicated team will support you with your next steps.



PERSONAL DEVELOPMENT

PSHE provides our students with the opportunity to explore a range of topics including financial management, interview technique and communication with employers, effective social media use and managing adversity using performance psychology strategies. Along with topics such as healthy R relationships, sex education, physical health, and mental wellbeing.



CAREERS

Students are provided with the opportunity to attend our very popular careers opportunities, including the Move It Performing Arts Convention, external sporting careers events and our Trust Careers Fayre. At these events you have the opportunity to meet with further and higher education providers and employers to broaden your horizons and learn how you can progress in your chosen career pathway. In Year 12 you will also take part in work experience in order to gain direct first-hand experience in the world of work.



TUTORIALS

You will meet with their form tutor three times a week and have regular access to Specialism Leads and the Head of Sixth Form. Staff are available for students to book 1:1 or small group sessions with to support learning, studies or wellbeing.



PASTORAL CARE

Our pastoral care is at the heart of what we do and woven through every student's experience. We foster friendly relationships among our students and provide daily opportunities to speak openly to Specialism staff. LS6 students can further benefit from access to dedicated Pastoral Leads who are on hand to provide 1:1 emotional wellbeing support and triage students, when required, for a range of external support services. LeAF Studio foster a whole school approach to promoting comfortable, happy, healthy, tolerant, resilient and safe students. Our open-minded KS5 pastoral support system surrounds the sixth formers at every level, enabling you to fulfil your potential and develop your passions.

PROUD TO BE CONNECTED

We are proud to boast connections with vocational colleges, universities and companies, regularly welcoming them to LS6 and visiting their facilities. We continue to build upon our industry links each academic year. The below is not an exhaustive list.



OUR EDUCATIONAL PARTNERS



LS6 COMMUNITY AND BEYOND

Every LS6 student has the opportunity to participate in a wide range of enriching trips and activities, all designed to help support their specialism training. At the heart of this lies our biennial sports tours and performing arts residentials, giving students a unique experience of training, competing and performing at the highest levels across Europe and the world. Sport students take residential trips to Barcelona and Lisbon, whilst Performing Arts biennial trip to New York has been running since 2017.

All LS6 students partake in an annual team building day in September, which provides our students with the opportunity to form strong relationships across the Sixth Form.

LS6 students unite at various points throughout the academic year for in-house events to ensure that LS6 is a fun and fulfilling experience for all our learners.

We provide an unrivalled provision, enabling students to experience a range of events and competitions that equip them for their future, professional pathways.

Performing Arts provides opportunities such as performing at Move It in London's ExCeL, Can You Dance, plus intimate in-house showcases culminating in our annual summer production which is usually a full scale musical or variety showcase. Our Sport Specialism provides opportunities for students to visit, train and compete abroad; exploring dual-career provisions at leading sporting universities, access to sporting event management, along with hosting and delivering a variety of events for the local community onsite.

Our Specialisms are proud to welcome industry-leading athletes, providers, creatives and performers as guest speakers, to share a plethora of real-life industry-based experiences for our learners to adopt within their own professional development. All students are encouraged to develop their professional work portfolios for the future career aspirations they may have.

In addition to this, our cross-curricular links allow academic subjects to provide numerous opportunities to attend field trips, screenings, performances and workshops which provide our students with the very best experiences to enrich their learning.



Leaders make sure that pupils and sixth-form students are well prepared for the next stages of their education or employment by providing high-quality independent careers advice and guidance.
(OFSTED)



LS6 ALUMNI

When students leave LS6, they complete their final years of study and training at some of the country's **most prestigious colleges and universities**. Some students leave and head straight into their chosen industry, applying their training to the real world of work. We are proud to say that students leave LeAF Studio Sixth Form with a wealth of knowledge and outstanding training in their fields. Often our Performing Arts students receive offers to study and train at vocational colleges with funding/scholarships, along with our Sports students attending leading universities competing in the BUCS leagues or pursuing a dual career.

Performing Arts Destinations

- Addict Dance Academy
- Arts Ed
- Bird College
- Connecting Arts (Greece)
- Cruise Ships
- Disneyland Paris
- ED5 International (Australia)
- Emil Dale Academy
- Italia Conti
- Laine Theatre Arts
- London College of Music
- LSMT
- Performers College
- PPA
- Reynolds Performing Arts
- Rose Bruford
- Stella Mann College
- Teaching
- The Brighton Academy
- The Place
- University of Chichester
- Urdang Academy
- Warner Leisure Hotels
- Wilkes Academy

Sporting Destinations

- AECC
- Bournemouth University
- Loughborough University
- Solent University
- St Mary's University
- Tournament Golf College
- UCFB
- University of Bath
- University of Derby
- University of Gloucestershire
- University of Plymouth
- University of Roehampton
- University of South Wales

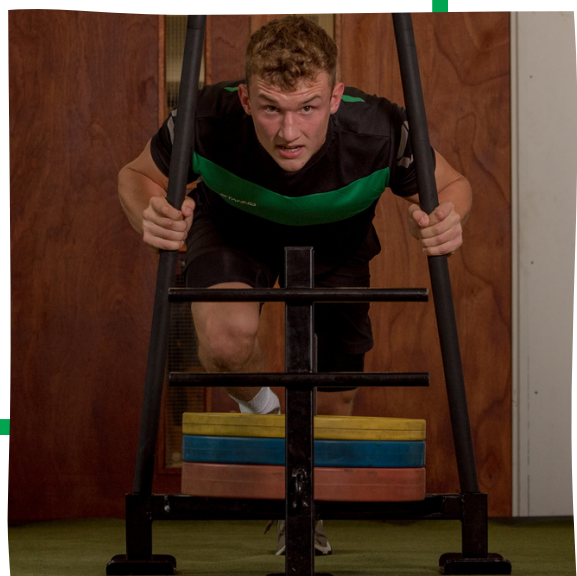
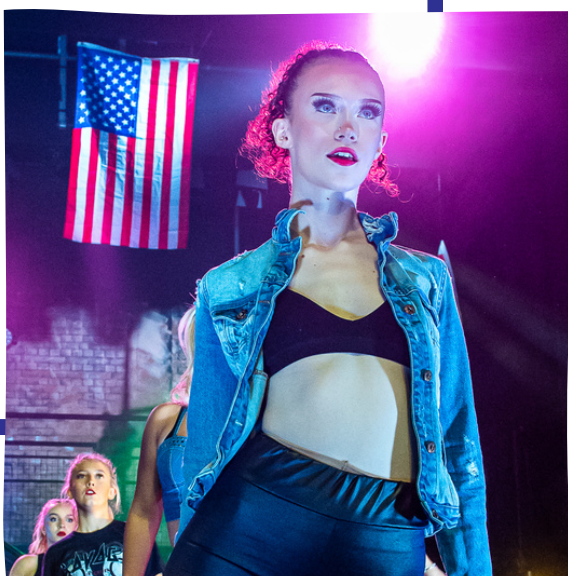
Academic Destinations

- Bournemouth University
- Solent University
- University of Exeter
- University of Winchester

"Before LS6, I'd never considered university and now, I'm here, with a pool of offers for my future studies"

"LeAF got me into vocational college and I wouldn't be here without them!"

"I was so supported with my applications and the process which I don't believe would have received anywhere else"



APPLYING FOR LS6

1

Attend an Open Evening

2

Select your pathway and course(s)

3

Apply by completing our online application form

4

Attend aptitude workshops and testing

5

Receive application decision and **enrol**

If you wish to apply to LS6, then you will need to complete an online application form, available on our website.

www.leafstudio.co.uk/apply

Once we have received your application form, we will contact you to arrange a visit to LeAF Studio.

All applicants will follow this process.

Step 1 – Fully completed online application form

Step 2 – Aptitude Workshops/Testing/Interview

Step 3 – Official offer and Sixth Form enrolment

Email: admissions@leafstudio.co.uk

Part of the Ambitions Academies Trust



LeAF
Studio



LEAF
STUDIO
SIXTH
FORM

PERFORMING ARTS | SPORT | ACADEMICS

***"I WISH I'D FOUND
LEAF STUDIO SOONER"***

LeAF Studio Sixth Form, Holloway Avenue, Bournemouth, Dorset, BH11 9JW

Tel: 01202 578886 | www.leafstudio.co.uk | sixthform@leafstudio.co.uk

Facebook: LeAF Studio School | Instagram: @leafstudioschool